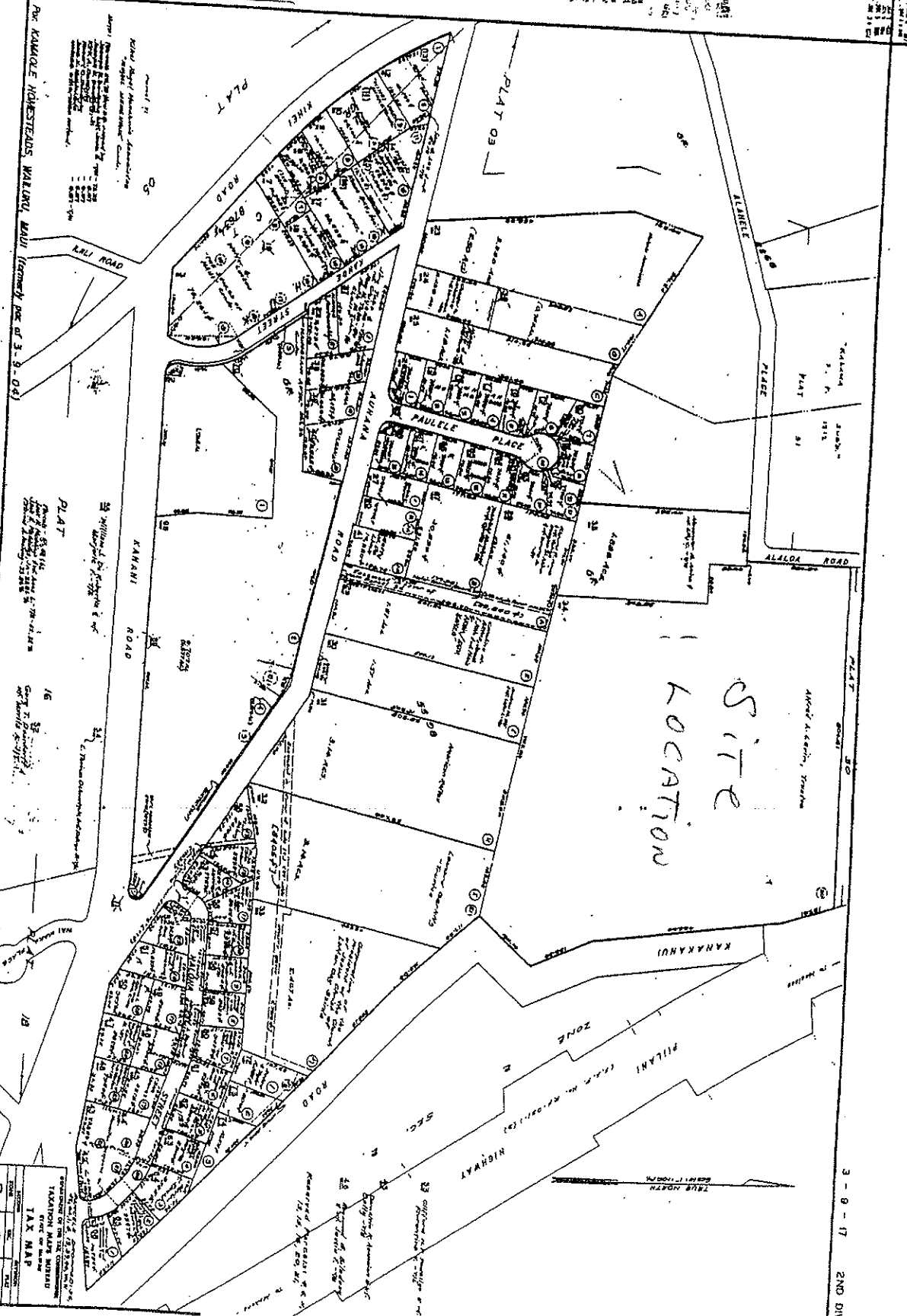


1. The map is a plan of a portion of the Territory of Hawaii, showing the boundaries of several tracts of land, including the Kakaia Tract, the Kakaia Tract, and the Kakaia Tract. The map is dated May 23, 1940.



251

SUBJECT TO CHANGE

3	9	17
TAXATION MAP NUMBER		
TAX MAP		

3-9-17 2ND DIV